

How U.S. cities can finance resilient and equitable infrastructure

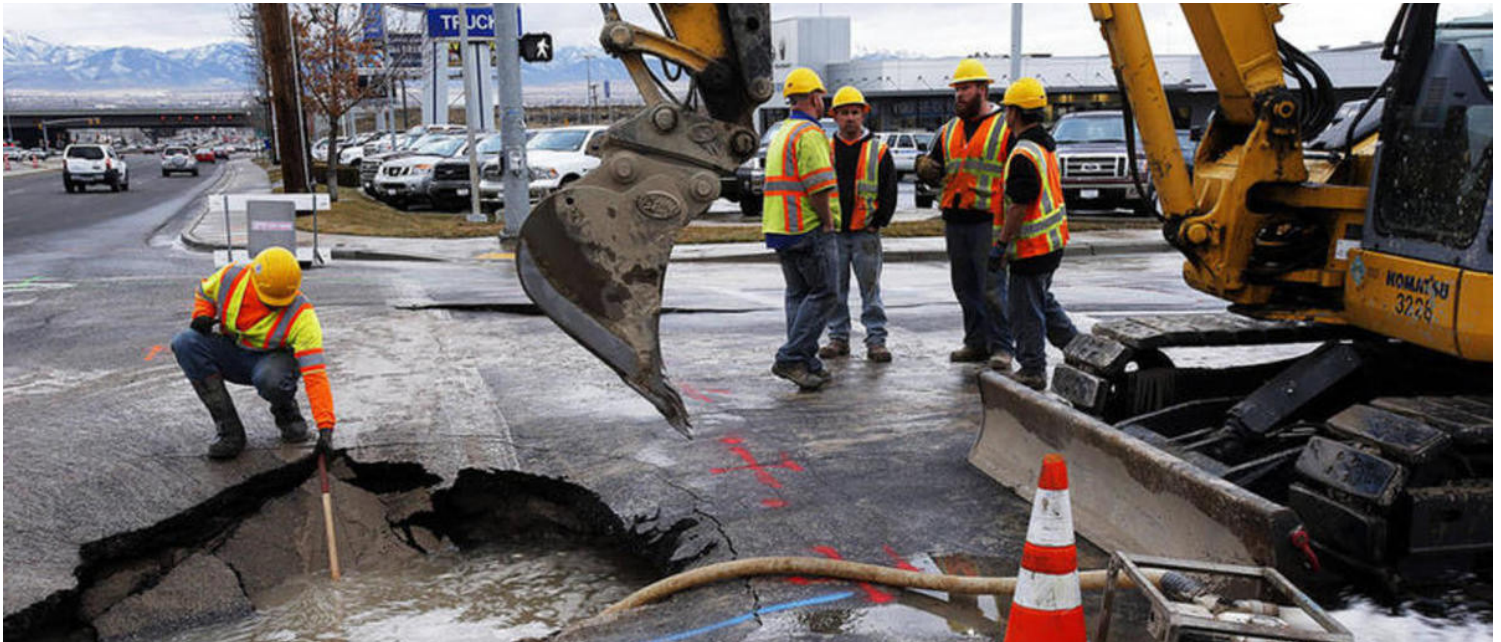


Image Credit: Deseret News

By Jen Mayer,

In a time with little bipartisan agreement, there's one common consensus in Washington: America's infrastructure desperately needs renewal. While details are scarce about the Trump administration's infrastructure plan, no one expects a significant increase in Federal funding for infrastructure. Instead, the administration may incentivize local funding, awarding Federal funds on a competitive basis to communities that raise new revenue for infrastructure.

Not that there's anything new about locals coming up with infrastructure funding. State and local governments have upped their contributions as Federal dollars have diminished. But with the new State and Local Tax (SALT) deduction limits making it even harder to raise local revenues, how will local governments step up even more?

A new guide for financing resilient and equitable infrastructure projects has some answers. As part of City Accelerator, an initiative led by Living Cities and supported by the Citi Foundation, four cities (Washington, Pittsburgh, San Francisco and St. Paul, Minn.) recently explored innovative revenue sources and creative financing tools, while examining their project development processes and advancing a diverse range of infrastructure projects.

Key takeaways include:

Diversify revenue sources. Cities and counties may feel tapped out, but projects may have revenue potential that can be unlocked with the right financing tools. Traditionally, capital projects have been funded with general taxes or user fees. Local governments have been slower to tap into revenues based on beneficiaries, like landowners benefiting from infrastructure projects, or ancillary and enterprise revenue opportunities, such as retail leasing, concessions, and advertising. Cities can also monetize existing assets and real estate. San Francisco was able to leverage construction of housing and street improvements from sale of vacant state land after removal of a highway interchange.

Explore flexible/innovative financing models. To make new revenue approaches work, local governments need access to patient, flexible capital. The United States Department of Transportation's Transportation Infrastructure Finance and Innovation Act (TIFIA) credit program and the EPA's Water Infrastructure Finance and Innovation (WIFIA) program are both designed with flexible repayment features like income-contingent repayments and up to a five-year delay on repayments after construction. That allows time for project-related revenue sources like fares and

SBE OUTREACH SERVICES

With 1.5 million businesses in our database, SBE is California's #1 source for diversity outreach.

Advertisements

Placed in the Small Business Exchange newspaper, SBE Today newsletter, and online at www.sbeinc.com

Faxed and Eblast Solicitations

Targeted mailings sent to businesses per your criteria.

Telemarketing

Telephone follow-up calls that follow a script of 5 questions you create.

Computer Generated Reports

Will fit right into your proposal, along with a list of interested firms to contact.

Contact Info:

795 Folsom Street, 1st Flr, Room 1124
San Francisco, CA 94107
Email: sbe@sbeinc.com
Website: www.sbeinc.com
Phone: (415) 778-6250, (800) 800-8534
Fax: (415) 778-6255

Publisher of
Small Business Exchange
weekly newspaper

■ Continued on page 10



California Sub-Bid Request Ads



Kiewit Infrastructure West Co.
4650 Business Center Drive Fairfield, CA 94534
Attn: Victor Molina • norcal.bids@kiewit.com
Fax: 707-439-7301

Requests sub-bids from qualified Subcontractor, Services, and/or Suppliers seeking to participate in the City of Fort Bragg, Wastewater Treatment Plant Upgrade Project in Fort Bragg, CA.

<http://www.epa.gov> / <http://www.sba.gov> /
www.californiaucp.org

Subcontractors and Suppliers for the following project:

**Wastewater Treatment Plant Upgrade Project
City Project No. 2018-01
Owner: City of Fort Bragg**

Bid Date: April 16, 2018 @ 2:00 P.M.

Disadvantaged Business Enterprises (DBEs)

Minority Business Enterprise (MBE), Women Business Enterprise (WBE), Small Business Enterprise (SBE), Small Business in a Rural Area (SBRA), Labor Surplus Area Firm (LSAF), or Historically Underutilized Business (HUB) Zone Businesses wanted for the following scopes, including, but not limited to:

Asphalt Paving, Aggregates, Bypass Pumping, Carpentry, Minor Concrete, Concrete Pumping, Concrete Ready-mix, Concrete Reinforcement Supply & Install, Concrete Forms, Precast Concrete, Cast in Place Concrete, Concrete Accessories, Dewatering, Earthwork, Electrical, Equipment, Erosion Control, FRP Fabrications, Fencing, HVAC, Joint Sealant, Masonry, Metals, Openings, Paintings & Coatings, Plumbing, Piping & Valves, Quality Control, Specialties, Signage, Street Sweeping & Water Truck, SWPPP, Structures, Thermal & Moisture Protection, Trucking & Hauling.

Bonding, insurance, and any technical assistance or information related to the plans or specification and requirements for the work will be made available to interested CUCP, MBE, SBE, SBRA, LSAF or HUB Certified DBE business suppliers and subcontractors. Assistance with obtaining necessary equipment, supplies, materials, or services for this project will be offered to interested certified suppliers and subcontractors.

**Subcontractor and Supplier Scopes are due
April 9, 2018 and Quotes NO LATER THAN
April 13, 2018 at 4 PM.**

Plans are available for viewing at our office at our address below and through SmartBidNet (SBN).

All subcontractors that are registered in our SBN database will receive an invitation to bid. Please visit <http://www.kiewit.com/districts/northern-california/overview.aspx> to register your company to be able to receive bidding information.

You can view the plans in our office during regular business hours by appointment.

100% Performance Bond and Payment Bonds (Subcontractor) and Supply Bond (PM Supplier) are required for this project.

Davis-Bacon Act

**American Iron and Steel Requirements Apply
Clean Water State Revolving Fund Applies**

An Equal Opportunity Employer

CA Lic. 433176
DIR # 1000001147



Kiewit Infrastructure West Co.
4650 Business Center Drive Fairfield, CA 94534
Attn: Victor Molina • norcal.bids@kiewit.com
Fax: 707-439-7301

Requests sub-bids from qualified Subcontractor, Consultants, and/or Suppliers seeking to participate in the Sacramento Regional County Sanitation District of Sacramento County, Channel Aeration Blower Project in Elk Grove, CA.

<http://www.epa.gov> / <http://www.sba.gov> /
www.californiaucp.org

Subcontractors and Suppliers for the following project:

**EchoWater - Channel Aeration Blower Project –
Contract No. 4385**

**Owner: Sacramento Regional County
Sanitation District**

Bid Date: May 2, 2018 @ 1:00 P.M.

Disadvantaged Business Enterprises (DBEs)

Minority Business Enterprise (MBE), Women Business Enterprise (WBE), Small Business Enterprise (SBE), Small Business in a Rural Area (SBRA), Labor Surplus Area Firm (LSAF), or Historically Underutilized Business (HUB) Zone Businesses wanted for the following scopes, including, but not limited to:

Asbestos & Lead Abatement, Asphalt Paving, Aggregates, Carpentry, Cathodic Protection, Minor Concrete, Concrete Pumping, Concrete Ready-mix, Concrete Reinforcement Supply & Install, Concrete Forms, Precast Concrete, Concrete Accessories, Clear & Grub, Grouting, Coiling Doors/Doors & Frames, Earthwork, Erosion Control, Electrical, Equipment, FRP Fabrications, Finishes, Fire/Security Alarms, Fire-Suppression Systems & Protection, Geosynthetics, HVAC, Instrumentation & Controls, Joint Sealant, Masonry, Metals, Openings, Paintings & Coatings, Plumbing, Piping & Valves, Public Address System, Quality Control, Roof Decking, Specialties, Signage, Street Sweeping, SWPPP, Support of Excavation, Structures, Thermal & Moisture Protection, Trucking & Hauling.

Bonding, insurance, and any technical assistance or information related to the plans or specification and requirements for the work will be made available to interested CUCP, MBE, SBE, SBRA, LSAF or HUB Certified DBE business suppliers and subcontractors. Assistance with obtaining necessary equipment, supplies, materials, or services for this project will be offered to interested certified suppliers and subcontractors.

**Subcontractor and Supplier Scopes are due
April 27, 2018 and Quotes
NO LATER THAN May 1, 2018 at 4 PM.**

Plans are available for viewing at our office at our address below and through SmartBidNet (SBN).

All subcontractors that are registered in our SBN database will receive an invitation to bid. Please visit <http://www.kiewit.com/districts/northern-california/overview.aspx> to register your company to be able to receive bidding information.

You can view the plans in our office during regular business hours by appointment.

100% Performance Bond and Payment Bonds are required for this project.

Davis-Bacon Act

**Buy American Requirements Apply
Owner Controlled Insurance Program (OCIP) Applies**

An Equal Opportunity Employer

CA Lic. 433176
DIR # 1000001147



Kiewit Infrastructure West Co.
10704 Shoemaker Ave., Santa Fe Springs, CA 90670
Tel: (562) 946-1816, Fax: (562) 946-3823
Contact: David Ryan at david.ryan@kiewit.com

Kiewit Infrastructure West Co. (Kiewit) is seeking sub-quotes from interested subcontractors and material vendors/suppliers including Disadvantaged Business Enterprises (DBE); Minority Business Enterprises (MBE), Woman Business Enterprises (WBE), Small Business Enterprises (SBE), Small Business in a Rural Area (SBRA); Labor Surplus Area Firm (LSAF), and Historically Underutilized Business (HUB) Zone Small Business Concern firms.

Project Owner:

Santa Rosa Regional Resources Authority

Project Name:

**Santa Rosa Water Reclamation Facility
Rehabilitation Project**

Project Location:

Temecula, Riverside County

Bid Due Date:

May 17, 2018 at 2:00 p.m.

This Project is a CWSRF Funded Project and the use of American Iron and Steel is required. The general description of work: Repairing concrete and apply new coatings, demolition of various existing systems and replacing them with new; provide a new sludge pump station and a new sludge handling facility; new yard piping, electrical and instrumentation, mechanical and plumbing, and misc site work.

Kiewit is requesting quotes in the areas described, but not limited to: Land surveying/site photography, quality control, aggregate, utility material, asbestos abatement, lead abatement, trucking & hauling, demolition, grading, subgrade and roadbed, street sweeping, underground piping sub (wet), ductile iron pipe, manhole material, asphalt paving, curbs and gutter, ready mix supply, concrete reinforcing installation, precast concrete, concrete drilling and saw cutting, stainless steel pipe, metal deck, damp proofing and waterproofing, sheet metal roofing, paints and coating, equipment, supply and treatment pump, mixers and flocculator, sewage and sludge pump, aeration equipment, pre-engineered structure, bridge crane, bolts and gaskets, hangers and support, valves, pipes and tubes and electrical work.

All responsive subcontractors must possess a valid California Contractor's license and provide acceptable insurance. Responsible subcontractors and material contractors will be required to provide bonding for 100% of their contract value. Bond premium will be reimbursed by Kiewit. Subcontractors, Consultants, Professional Service Firms, and Material Vendors/Suppliers must be able to accept all terms and conditions of the project under its resultant agreement.

Kiewit intends to conduct itself in good faith with all firms regarding participation on this project. For further information, to discuss your specialty or scope of work, the requirements of the contract, licensing, project scheduling, insurance or bonding, please contact David Ryan. Plans and specifications are available for review at the address listed herein or through SmartBidNet by contacting Kiewit.

Kiewit Infrastructure West Co.

is an Equal Opportunity Employer.

**We encourage qualified women, minorities,
veterans, individuals with disabilities,
and other to apply.**



California Sub-Bid Request Ads



19 PAMARON WAY, NOVATO, CA 94949
 PHONE: (415) 382-1188 • FAX: (415) 883-7529
 CONTACT: Kelsey Godfrey
 Email: bid@arntzbuilders.com

REQUESTS QUOTATIONS FROM ALL STATE OF CALIFORNIA DGS CERTIFIED DVBE SUBCONTRACTORS & SUPPLIERS and ALL QUALIFIED SUBCONTRACTORS & SUPPLIERS FOR ALL TRADES FOR THE FOLLOWING PROJECT

IRENE SNOW ELEMENTARY SCHOOL CAMPUS RENOVATION
 NAPA, CA

BID DATE: April 25, 2018 @ 2:00pm
ESTIMATE: \$16,500,000

Trades needed but not limited to: Demolition, Site Concrete, Masonry, Structural Steel Framing, Metal Decking, Thermal Insulation, Weather Barriers, Metal Roof Panels, Sheet Metal Flashing & Trim, Penetration Firestopping, Joint Sealants, Hollow Metal Doors and Frames, Access Doors and Frames, Coiling Counter Doors, Aluminum-Framed Entrances and Storefronts, Glazed Aluminum Curtain Walls, Glazing, Cement Plastering, Gyp Board, Ceramic Tiling, Acoustical Panel Ceilings, Resilient Base and Accessories, Resinous Flooring, Tile Carpeting, Sound Absorbing Wall Units, Painting, Visual Display Units, Signage, Toilet Compartments, Metal Lockers, Foodservice Equipment, Projection Screens, Roller Window Shades, Plastic-Laminate-Clad Countertops, Wheelchair Lifts, Plumbing, HVAC, Electrical, Earthwork, Grading & Paving, Chainlink Fences & Gates, Landscape & Irrigation, Underground.

All contractors shall be registered with the Department of Industrial Relations pursuant to Labor Code Section 1725.5 to be qualified to bid on, be listed in a bid proposal (submitted on or after March 1, 2015) or be awarded a contract for public work on a public works project (awarded on or after April 1, 2015). In addition, they are subject to the requirements of Section 4104 of the Public Contract Code.

BONDING, INSURANCE, TECHNICAL ASSISTANCE AVAILABLE. PLANS AVAILABLE IN GC'S PLAN ROOM. SUCCESSFUL SUBCONTRACTORS WILL BE REQUIRED TO SIGN ARNTZ BUILDERS, INC. STANDARD SUBCONTRACT AGREEMENT WHICH INCLUDES ARNTZ BUILDERS, INC. REQUIREMENT THAT SUBCONTRACTORS PROVIDE A 100% FAITHFUL PERFORMANCE AND PAYMENT BOND OF THE SUBCONTRACT PRICE FROM A TREASURY LISTED SURETY COMPANY ACCEPTABLE TO ARNTZ BUILDERS. BOND PREMIUM TO BE INCLUDED IN BID AS A SEPARATE ITEM. SUBCONTRACTORS WILL BE REQUIRED TO PROVIDE A WAIVER OF SUBROGATION ENDORSEMENT TO THEIR WORKERS COMPENSATION INSURANCE.

WE ARE SIGNATORY TO THE CARPENTER'S AND LABORER'S COLLECTIVE BARGAINING AGREEMENTS AN EQUAL OPPORTUNITY EMPLOYER



Seeking Qualified Disadvantaged Business Enterprises (DBE) as Subconsultants for

Owner: Los Angeles County Metropolitan Transportation Authority (LACMTA)
Request for Proposal AE51181

Environmental Compliance and Sustainability Support Services

Proposal Due Date: 2:00 PM (PST)
Thursday, May 10, 2018

This advertisement is in response to LACMTA's DBE Program. LA3 Team intends to conduct itself in "Good Faith" with DBE firms regarding participation on this project. Quotes are required by COB, April 30, 2018 so that all bids/proposals can be fairly evaluated. Please submit bids/proposals for the following areas of work: Project Manager, Environmental, Project Control, Hazardous Waste, Civil and Environmental Engineering, Environmental Construction, Stormwater, Air Quality, Environmental Design, Environmental Planning, Transportation Engineering, Environmental Analyst/Inspector, GIS, Project Management and Other Technical Training, Office Engineer, Facilities Manager, Resource Conservation, and Marketing.

For more information about this proposal please meet the LA3 Team:
9:00 AM Friday, April 13, 2018
Los Angeles Chamber of Commerce
350 S. Bixel Street, Los Angeles, CA 90017

Interested DBE firms must provide proof of certification acceptable to the LACMTA.

RESPONSES MUST BE RECEIVED NO LATER THAN 5:00 P.M., MONDAY APRIL 30, 2018

LA3 Team
c/o Burns & McDonnell Engineering
200 S. Los Robles Avenue, Suite 250
Pasadena, CA 91101
Attention: Jennifer Trotter

Bonding not required. E & O insurance may be required as applicable. Firms needing assistance in identifying resources available to DBE firms should contact Jennifer Trotter, Sr. Public Involvement Specialist at (626) 817-7918 or LA3@burnsmcd.com. A copy of the RFP is available on-line at the LACMTA Vendor Portal Internet site at www.Business.Metro.net. Technical Questions should be directed to Joel Farrier via e-mail at jbfarrier@burnsmcd.com.

D'Arcy & Harty Construction, Inc
(415) 822-5200 Phone • (415) 822-0747 (Fax)
Estimator: willie@darcyhart.com

Rodeo Sanitary District
Sewer Year 3C Improvements
Rodeo, CA

Bids: 5/8/2018 at 2:00 PM

DBE sub-bids requested for:
Traffic Control, Saw-cutting, Trucking
Paving and Concrete sidewalk

CAHILL CONTRACTORS, LLC
Requests bids from Certified SBE
Subcontractors and Suppliers for the following DESIGN BUILD TRADES:

Exterior Building Maintenance / Elevators (DESIGN ASSIST) / Signage / Fire Sprinkler / Solar Hot Water / Shoring & Underpinning / Crane Service

681 FLORIDA STREET FAMILY HOUSING - EARLY BID (DESIGN BUILD TRADES)
681 Florida Street, San Francisco, CA 94110

This is a SFCMD project with construction workforce and prevailing wage requirements.

BID DATE: 5/8/18 @ 2PM

Voluntary Pre-bid Meeting:
 4/23/18 @ 10AM, Cahill's Office

BID DOCUMENTS: Please contact Colby for access to documents on BuildingConnected.

CAHILL CONTRACTORS, LLC
Colby Smith at estimating@cahill-sf.com
(415) 677-0611



ENVIRONMENTAL CONTRACTORS, INC.

CAL LIC. NO. 723241

11555 Dublin Boulevard • Dublin, CA 94568-2909
 Phone: (925) 803-4333 • FAX: (925) 803-4334

Estimator: Chris Pieri
 cpieri@pacificstates.net

Pacific States Environmental Contractors, Inc. (PSEC) is preparing a bid as a Prime Contractor for the project listed below:

Sedgwick Elementary School
Expansion Property.

Project/Contract Number: 18-B03-24

BID DATE: April 17, 2018 at 1pm

Owner: Cupertino Union School District

We hereby encourage responsible participation of DVBE's and solicit their subcontractors or materials and/or suppliers quotation for the following types of work including but not limited to:

Asbestos/Lead Abatement and Trucking

At our discretion, 100% Payment and 100% Performance bonds may be required as a subcontract condition. Please call if you need assistance in obtaining bonding, insurance, equipment, materials and/or supplies for this project.

This will be a PREVAILING WAGE JOB.

Specifications may be reviewed at our office located at 11555 Dublin Boulevard, Dublin, CA. PSEC is willing to breakout any portion of work to encourage DVBE's and solicit their subcontractor or materials and/or suppliers and trucking quotation as well as increase the expectations of meeting the Outreach Program goal. If you require any assistance, please contact the Estimator, Chris Pieri, email him at cpieri@pacificstates.net or call (925) 803-4333 and bids may be faxed to us at (925) 803-4334. When submitting any public works bid please include your DUNS number and DIR number. For questions regarding registration for DIR use the link at: www.dir.ca.gov/Public-Works/PublicWorks.html. We are an equal opportunity employer.

We are an equal opportunity employer.





California Sub-Bid Request Ads

DESILVA GATES CONSTRUCTION

11555 Dublin Boulevard • P.O. Box 2909
Dublin, CA 94568-2909
(925) 829-9220 / FAX (925) 803-4263
Estimator: **Victor Le**
Website: www.desilvagates.com
An Equal Opportunity Employer

DeSilva Gates Construction (DGC)
is preparing a bid as a Prime Contractor
for the project listed below:

DANVILLE VARIOUS STREETS & ROADS PRESERVATION PROJECT (SYCAMORE VALLEY ROAD & EL CERRO BOULEVARD PAVEMENT REHABILITATION – OBAG GRANT FUNDED)

Federal Aid Project No. STPL-5434(021)
Disadvantaged Business Enterprise Goal
Assigned is 5%

OWNER:

TOWN OF DANVILLE,
510 La Gonda Way, Danville, CA 94526
BID DATE: April 12th, 2018 @ 2:00 P.M.

DGC is soliciting quotations from certified Disadvantaged
Business Enterprises, for the following types of work and
supplies/materials including but not limited to:

Adjust Iron, Bridge, Clearing and Grubbing/Demolition,
Cold Plane, CPM Scheduling Consultant, Electrical,
Joint Seal, Lead Compliance Plan, Minor Concrete, Paving
Fabric, Roadside Signs, Striping, SWPPP Prep/Water
Pollution Control Plan Prepare, Underground, Truck-
ing, Water Trucks, Street Sweeping, Hot Mix Asphalt
(Type A) Material.

Plans and specifications may be reviewed at our offices
located at 11555 Dublin Boulevard, Dublin, CA or 7700
College Town Drive, Sacramento, CA, or at your local
Builders Exchange, or reviewed and downloaded from
the ftp site at <ftp://ftp%25desilvagates.com:f7pa55wd@pub.desilvagates.com> (if prompted the username is [ftp@desilvagates.com](ftp://ftp%25desilvagates.com:f7pa55wd@pub.desilvagates.com) and password is [f7pa55wd](ftp://ftp%25desilvagates.com:f7pa55wd@pub.desilvagates.com)) or from the
Owner's site at <http://www.danville.ca.gov/Government/RFPs-and-Bids/>

Fax your bid to (925) 803-4263 to the attention of Estimator
Victor Le. If you have questions for the Estimator, call
at (925) 829-9220. When submitting any public works bid
please include your DUNS number and DIR number. For
questions regarding registration for DIR use the link at:
www.dir.ca.gov/Public-Works/PublicWorks.html

If you need DBE support services and assistance in obtain-
ing bonding, lines of credit, insurance, necessary equip-
ment, materials and/or supplies or related assistance or
services, for this project call the Estimator at (925) 829-
9220, or contact your local Small Business Development
Center Network (<http://californiasbdc.org>) or contact the
California Southwest Transportation Resource Center
(www.transportation.gov/osdbu/SBTRCs). DGC is willing
to breakout portions of work to increase the expectation of
meeting the DBE goal.

At our discretion, 100% Payment and 100% Performance
bonds may be required as a subcontract condition. This
will be a PREVAILING WAGE JOB. DGC is an equal
opportunity employer.

DESILVA GATES CONSTRUCTION

11555 Dublin Boulevard • P.O. Box 2909
Dublin, CA 94568-2909
(925) 829-9220 / FAX (925) 803-4263
Estimator: **JACK SHEWMAKER**
Website: www.desilvagates.com
An Equal Opportunity Employer

DeSilva Gates Construction (DGC)
is preparing a bid as a Prime Contractor
for the project listed below:

CALTRANS ROUTE 20 – CONSTRUCTION ON STATE HIGHWAY IN YUBA COUNTY IN AND NEAR MARYSVILLE FROM BUCHANAN STREET TO 0.1 MILE EAST OF LEEVEE ROAD, Contract No. 03-1G0104,

Federal Aid Project No. ACNH-P020(183)E
Disadvantaged Business Enterprise Goal
Assigned is 13%

OWNER:

STATE OF CALIFORNIA -
DEPARTMENT OF TRANSPORTATION
1727 30th Street, Bidder's Exchange, MS 26,
Sacramento, CA 95816

BID DATE: APRIL 25, 2018 @ 2:00 P.M.

DGC is soliciting quotations from certified Disadvantaged
Business Enterprises, for the following types of work and
supplies/materials including but not limited to:

AC DIKE, CONSTRUCTION AREA SIGNS, CRACK
SEALING, ELECTRICAL, EMULSION SUPPLIER,
LEAD COMPLIANCE PLAN, PAVEMENT MILL-
ING, ROADSIDE SIGNS, STRIPING, SWPPP/WATER
POLLUTION CONTROL PLAN PREPARATION,
TRAFFIC CONTROL SYSTEMS, TRUCKING, WA-
TER TRUCKS, STREET SWEEPING, CLASS 2 AG-
GREGATE BASE MATERIAL, HOT MIX ASPHALT
(TYPE A) MATERIAL.

Plans and specifications may be reviewed at our offices
located at 11555 Dublin Boulevard, Dublin, CA or 7700
College Town Drive, Sacramento, CA, or at your local
Builders Exchange, or reviewed and downloaded from
the ftp site at <ftp://ftp%25desilvagates.com:f7pa55wd@pub.desilvagates.com> (if prompted the username is [ftp@desilvagates.com](ftp://ftp%25desilvagates.com:f7pa55wd@pub.desilvagates.com) and password is [f7pa55wd](ftp://ftp%25desilvagates.com:f7pa55wd@pub.desilvagates.com)) or from the
Owner's site at www.dot.ca.gov/hq/esc/oe/weekly_ads/all_adv_projects.php

Fax your bid to (925) 803-4263 to the attention of Estimator
Jack Shewmaker. If you have questions for the Estimator,
call at (925) 829-9220. When submitting any public works
bid please include your DUNS number and DIR number.
For questions regarding registration for DIR use the link at:
www.dir.ca.gov/Public-Works/PublicWorks.html

If you need DBE support services and assistance in obtain-
ing bonding, lines of credit, insurance, necessary equip-
ment, materials and/or supplies or related assistance or
services, for this project call the Estimator at (925) 829-
9220, or contact your local Small Business Development
Center Network (<http://californiasbdc.org>) or contact the
California Southwest Transportation Resource Center
(www.transportation.gov/osdbu/SBTRCs). DGC is willing
to breakout portions of work to increase the expectation of
meeting the DBE goal.

At our discretion, 100% Payment and 100% Performance
bonds may be required as a subcontract condition. This
will be a PREVAILING WAGE JOB. DGC is an equal
opportunity employer.

DESILVA GATES CONSTRUCTION

11555 Dublin Boulevard • P.O. Box 2909
Dublin, CA 94568-2909
(925) 829-9220 / FAX (925) 803-4263
Estimator: **JIM YACKLEY**
Website: www.desilvagates.com
An Equal Opportunity Employer

DeSilva Gates Construction (DGC)
is preparing a bid as a Prime Contractor
for the project listed below:

CONSTRUCTION OF SOUTHFIELD PAVEMENT IMPROVEMENTS, SOUTH FIELD OAKLAND INTERNATIONAL AIRPORT, OAKLAND, CA AIP 3-06-0170-(FUTURE)

OWNER:

PORT OF OAKLAND
Board of Port Commissioners,
530 Water Street, Room 629,
Oakland, CA 94607

BID DATE: APRIL 19, 2018 @ 12:00 P.M.

DGC is soliciting quotations from certified Disadvantaged
Business Enterprises, for the following types of work and
supplies/materials including but not limited to:

COLD PLANE, CRACK SEALING, ELECTRICAL,
EMULSION SUPPLIER, JOINT SEAL, MINOR
CONCRETE, ROADWAY EXCAVATION, STRIP-
ING, SURVEY/STAKING, SWPPP/WATER POLLU-
TION CONTROL PLAN PREPARATION, TESTING,
TRUCKING, WATER TRUCKS, STREET SWEEP-
ING, CLASS 2 AGGREGATE BASE MATERIAL,
HOT MIX ASPHALT (TYPE A) MATERIAL.

Plans and specifications may be reviewed at our offices
located at 11555 Dublin Boulevard, Dublin, CA or 7700
College Town Drive, Sacramento, CA, or at your local
Builders Exchange, or reviewed and downloaded from
the ftp site at <ftp://ftp%25desilvagates.com:f7pa55wd@pub.desilvagates.com> (if prompted the username is [ftp@desilvagates.com](ftp://ftp%25desilvagates.com:f7pa55wd@pub.desilvagates.com) and password is [f7pa55wd](ftp://ftp%25desilvagates.com:f7pa55wd@pub.desilvagates.com)) or from the
Owner's site at <http://www.portoakland.com/Bids>

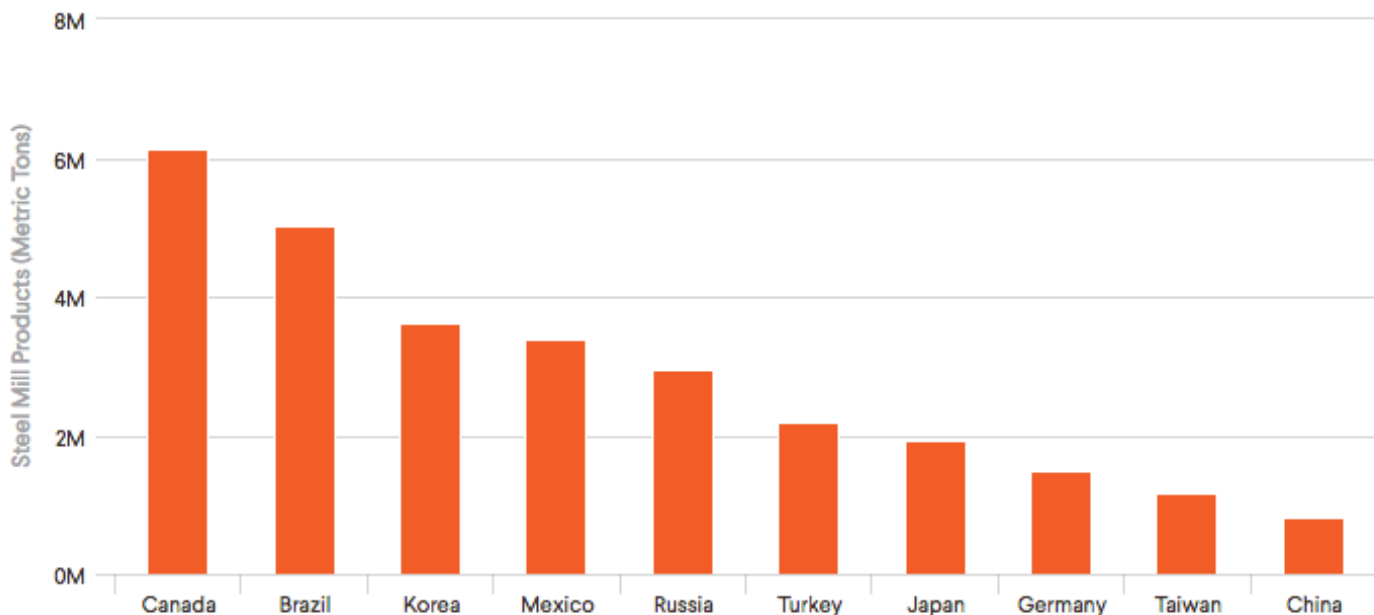
Fax your bid to (925) 803-4263 to the attention of Estimator
Jim Yackley. If you have questions for the Estimator,
call at (925) 829-9220. When submitting any public works
bid please include your DUNS number and DIR number.
For questions regarding registration for DIR use the link at
www.dir.ca.gov/Public-Works/PublicWorks.html

If you need DBE support services and assistance in obtain-
ing bonding, lines of credit, insurance, necessary equip-
ment, materials and/or supplies or related assistance or
services, for this project call the Estimator at (925) 829-
9220, or contact your local Small Business Development
Center Network (<http://californiasbdc.org>) or contact the
California Southwest Transportation Resource Center
(www.transportation.gov/osdbu/SBTRCs). DGC is willing
to breakout portions of work to increase the expectation of
meeting the DBE goal.

At our discretion, 100% Payment and 100% Performance
bonds may be required as a subcontract condition. This
will be a PREVAILING WAGE JOB. DGC is an equal
opportunity employer.

The Risks of U.S. Steel and Aluminum Tariffs

U.S. Steel Imports, 2017



By James McBride,

Introduction

In March 2018, President Donald J. Trump announced he will apply across-the-board tariffs, or import taxes, on steel and aluminum. Trump argues that the measures are necessary to protect U.S. national security, which he claims has been degraded by the decline of the domestic steel and aluminum industries.

Many economists, however, say that previous experience shows that such tariffs will likely fail to revitalize domestic producers while imposing costs on the rest of the economy. Meanwhile, trade experts worry that the tariffs—25 percent on steel and 10 percent on aluminum—could set off a trade war that could ensnare some close U.S. allies, such as Canada, and undermine the global trading system.

Why is Trump taking these actions now?

Protecting American industry, especially steel, was a centerpiece of Trump's 2016 campaign. "It will be American steel that will fortify America's crumbling bridges," he said on the stump. Steel employment has fallen from nearly 650,000 workers in the 1950s to some 140,000 today, with many of the closed mills in swing states such as Pennsylvania.

Many steel and aluminum producers around the world have long blamed the Chinese government for subsidizing production of the metals in vio-

lation of global trade rules, which many analysts say has flooded the global market with low-cost product and sent prices plunging. U.S. producers have clamored for protection from such "dumping" via tariffs or quotas, which previous administrations have provided in limited cases.

Trump's planned tariffs, however, are potentially much broader. The president has the authority to apply them under a national security, rather than purely economic, rationale, based on a little-used 1962 trade law. In April 2017, the Commerce Department began an investigation into whether steel and aluminum imports "impaired national security." It concluded in early 2018 that they did. This opened the door for Trump to apply tariffs as he sees fit. Trump's announcement came little more than a month after he applied broad tariffs on solar panel and washing machine imports to protect domestic producers.

How could it impact U.S. industry?

Many large steel and aluminum producers cheered the tariffs. The American Iron and Steel Institute thanked Trump for "addressing the steel crisis," and the second-largest American aluminum producer, Century Aluminum, said the measures will spur them to increase domestic investment.

However, most economists say that the tariffs are unlikely to help U.S. producers. They point to previous attempts to protect the steel industry that have failed to arrest the sector's decline, and they say that innovation in the industry, not im-

ports, are primarily to blame for lost jobs. Declining demand for steel is another major factor, with U.S. consumption falling almost in half since the 1970s.

Economists also warn that tariffs, which will raise the cost of steel and aluminum, will hurt the many industries that use those metals, costing jobs and increasing prices for consumers. This could include automakers, aircraft manufacturers, beer and soda companies, the energy industry, and the construction sector. Together, these industries employ far more people than do steel and aluminum producers. Manufacturing groups have said Trump's measures will cost thousands of jobs.

How do Trump's proposals differ from past tariffs?

A number of previous presidents imposed tariffs or other trade barriers to protect U.S. industry from cheap foreign imports. Presidents Lyndon B. Johnson, Richard M. Nixon, Jimmy Carter, and Ronald Reagan applied either quotas—import limits—or price floors on steel. Economic studies have concluded that these measures did little to stop the decline of the industry.

More recently, the administrations of George W. Bush and Barack Obama both applied steel tariffs. Bush imposed broad tariffs of up to 30 percent on steel imports in 2002. These were meant to last three years but were withdrawn early, af-



California Sub-Bid Request Ads

DESILVA GATES CONSTRUCTION

11555 Dublin Boulevard • P.O. Box 2909
Dublin, CA 94568-2909
(925) 829-9220 / FAX (925) 803-4263
Estimator: **ERIC ALLRED**
Website: www.desilvagates.com
An Equal Opportunity Employer

DeSilva Gates Construction (DGC)
is preparing a bid as a Prime Contractor
for the project listed below:

**CALTRANS FOR CONSTRUCTION ON
STATE HIGHWAY IN SANTA CLARA COUNTY
IN SAN JOSE FROM ROUTE 85/101
SEPARATION TO GUADALUPE RIVER BRIDGE
CONTRACT NO. 04-3K6504**

OWNER:
**STATE OF CALIFORNIA
DEPARTMENT OF TRANSPORTATION
1727 30th Street, Bidder's Exchange, MS 26,
Sacramento, CA 95816**

BID DATE: April 24th, 2018 @ 2:00 P.M.

DGC is soliciting quotations from certified Disabled Veterans Business Enterprises and Small Business Enterprises, for the following types of work and supplies/materials including but not limited to:

AC DIKE, COLD PLANE, CONSTRUCTION AREA SIGN, ELECTRICAL EMULSION SUPPLIER, TRAFFIC CONTROL SYSTEMS, HOT MIX ASPHALT (TYPE B) MATERIAL AND RUBBERIZED HMA (OPEN GRADE) MATERIAL

Plans and specifications may be reviewed at our offices located at 11555 Dublin Boulevard, Dublin, CA or 7700 College Town Drive, Sacramento, CA, or at your local Builders Exchange, or reviewed and downloaded from the ftp site at <ftp://ftp%25desilvagates.com:f7pa55wd@pub.desilvagates.com> (if prompted the username is [ftp@desilvagates.com](ftp://ftp%25desilvagates.com:f7pa55wd@pub.desilvagates.com) and password is [f7pa55wd](ftp://ftp%25desilvagates.com:f7pa55wd@pub.desilvagates.com)) or from the Owner's site at www.dot.ca.gov/hq/esc/oe/weekly_ads/all_adv_projects.php

Fax your bid to (925) 803-4263 to the attention of Estimator Eric Allred. If you have questions for the Estimator, call at (925) 829-9220. When submitting any public works bid please include your DUNS number and DIR number. For questions regarding registration for DIR use the link at: www.dir.ca.gov/Public-Works/PublicWorks.html

If you need DVBE support services and assistance in obtaining bonding, lines of credit, insurance, necessary equipment, materials and/or supplies or related assistance or services, for this project call the Estimator at (925) 829-9220, or contact your local Small Business Development Center Network (<http://californiasbdc.org>) or contact the California Southwest Transportation Resource Center (www.transportation.gov/osdbu/SBTRCs). DGC is willing to breakout portions of work to increase the expectation of meeting the DVBE goal.

At our discretion, 100% Payment and 100% Performance bonds may be required as a subcontract condition. This will be a PREVAILING WAGE JOB. DGC is an equal opportunity employer.

DESILVA GATES CONSTRUCTION

11555 Dublin Boulevard • P.O. Box 2909
Dublin, CA 94568-2909
(925) 829-9220 / FAX (925) 803-4263
Estimator: **Victor Le**
Website: www.desilvagates.com
An Equal Opportunity Employer

DeSilva Gates Construction (DGC)
is preparing a bid as a Prime Contractor
for the project listed below:

**CALTRANS ROUTE 20
CONTRACT NO. 03-0G1204
STATE HIGHWAY IN SUTTER COUNTY NEAR
MERIDIAN FROM 0.1 MILE EAST OF MERIDIAN
ROAD TO SUTTER BYPASS BRIDGE
Federal Aid Project No. ACNH-P020(182)E
Disadvantaged Business Enterprise Goal
Assigned is 10%**

OWNER:
**STATE OF CALIFORNIA
DEPARTMENT OF TRANSPORTATION
1727 30th Street, Bidder's Exchange, MS 26,
Sacramento, CA 95816**

BID DATE: April 26TH, 2018 @ 2:00 P.M.

DGC is soliciting quotations from certified Disadvantaged Business Enterprises, for the following types of work and supplies/materials including but not limited to:

AC Dike, Cold Plane, Construction Area Sign, Minor Concrete Structure, Object Markers/ Delineators, Rumble Strip, SWPPP Prep/ Water Pollution Control Plan Prepare, Vegetation Control, Trucking, Water Trucks, Street Sweeping, Shoulder Backing Material, Hot Mix Asphalt (Type A) Material, Rubberized HMA (Open Grade) Material, Rubberized HMA (Gap Grade) Material.

Plans and specifications may be reviewed at our offices located at 11555 Dublin Boulevard, Dublin, CA or 7700 College Town Drive, Sacramento, CA, or at your local Builders Exchange, or reviewed and downloaded from the ftp site at <ftp://ftp%25desilvagates.com:f7pa55wd@pub.desilvagates.com> (if prompted the username is [ftp@desilvagates.com](ftp://ftp%25desilvagates.com:f7pa55wd@pub.desilvagates.com) and password is [f7pa55wd](ftp://ftp%25desilvagates.com:f7pa55wd@pub.desilvagates.com)) or from the Owner's site at www.dot.ca.gov/hq/esc/oe/weekly_ads/all_adv_projects.php

Fax your bid to (925) 803-4263 to the attention of Estimator Victor Le. If you have questions for the Estimator, call at (925) 829-9220. When submitting any public works bid please include your DUNS number and DIR number. For questions regarding registration for DIR use the link at: www.dir.ca.gov/Public-Works/PublicWorks.html

If you need DBE support services and assistance in obtaining bonding, lines of credit, insurance, necessary equipment, materials and/or supplies or related assistance or services, for this project call the Estimator at (925) 829-9220, or contact your local Small Business Development Center Network (<http://californiasbdc.org>) or contact the California Southwest Transportation Resource Center (www.transportation.gov/osdbu/SBTRCs). DGC is willing to breakout portions of work to increase the expectation of meeting the DBE goal.

At our discretion, 100% Payment and 100% Performance bonds may be required as a subcontract condition. This will be a PREVAILING WAGE JOB. DGC is an equal opportunity employer.

REQUESTING BIDS FROM
DBE/MBE/WBE/SBE/LBE/DVBE/OBE
Subcontractors and Vendors
**Project: C35 Interlocking Renewal Project
Oakland, CA**
Reference #: 15CQ-110
**Owner: San Francisco Bay Area
Rapid Transit District (BART)**
Bid date: April 24, 2018

DMZ Builders is requesting quotes from all qualified subcontractors and suppliers, including DISADVANTAGED BUSINESS ENTERPRISES (DBE) and SMALL BUSINESS ENTERPRISES (SBE) for all items of work, including but not limited to the following: Construction Survey, Project Schedule (CPM), Construction Area Signs, Traffic Control Systems, Water Pollution Control Program, QSD/QSP Services and SWPPP Support, Temporary Erosion Control, Earthwork, Sitework, Drainage, Underground Utilities, Fencing, Electrical and Traction Power, Track Work.

Plans and specifications can be obtained from Bay Area Rapid Transit District at <http://www.bart.gov> or please contact Aravind Duvvuru for assistance or viewing by emailing estimating@dmzbuilders.com.

Technical questions or assistance can be obtained from Aravind Duvvuru at DMZ Builders at 925-826-5387, FAX 925-826-5766 or email estimating@dmzbuilders.com

Please send quotes to: estimating@dmzbuilders.com or fax to 925-826-5766 at least by close of business on 4/23/2018 and include any certification you may have. Please contact DMZ if you require assistance in obtaining bonding, lines of credit, insurance, equipment, supplies, materials or technical assistance.

DMZ BUILDERS
4070 Nelson Avenue, Ste A,
Concord, CA 94520
Phone 925-826-5387 • Fax: 925-825-5400
An Equal Opportunity Employer

DBE SUBCONTRACTORS/SUPPLIER BIDS REQUESTED

**CONTRACT NO. C51209C1166
RAIL TO RAIL ACTIVE TRANSPORTATION
CORRIDOR CONNECTOR PROJECT,
LOS ANGELES, CA.**

**BID/PROPOSAL SUBMITTAL DATE:
MAY 01, 2018 AT 2:00 PM**

OWNER: LOS ANGELES COUNTY
METROPOLITAN TRANSPORTATION
AUTHORITY (METRO)

PERFORMANCE/PAYMENT/
SUPPLY BOND MAY BE REQUIRED

THIS ADVERTISEMENT IS IN RESPONSE TO METRO'S DBE PROGRAM. GRIFFITH COMPANY INTENDS TO CONDUCT ITSELF IN "GOOD FAITH" WITH DBE FIRMS REGARDING PARTICIPATION ON THIS PROJECT. DRAWINGS AND SPECS WILL BE REVIEWED IN OUR OFFICE **MONDAY THROUGH FRIDAY, 8:00 AM TO 5:00 PM.** QUOTES ARE REQUIRED BY COB, APRIL 25, 2018, SO THAT ALL BIDS CAN BE FAIRLY EVALUATED. PLEASE SUBMIT BIDS FOR THE FOLLOWING WORK (BUT NOT LIMITED TO): **STRIPING, LANDSCAPE, FENCING, SURVEY, QC, TRUCKING, EQUIPMENT RENTAL, ASPHALT BASE, SWPPP/QSP, CONCRETE, SITE FURNISHINGS, ELECTRICAL SUPPLIER, AND MISC.**

GRIFFITH COMPANY
CONTACT: DAN LEEPER, PROJECT MANAGER
AND/OR
JASON SPEAR, CHIEF ESTIMATOR
12200 BLOOMFIELD AVE.,
SANTA FE SPRINGS, CA. 90670
T: 562/929/1128 – F: 562/864/8970

**Visit www.sbeinc.com to download a PDF
version of the
latest SBE Newspaper and SBE Newsletter**



California Sub-Bid Request Ads

**PROJECT: Interchange Improvements – I-215 @ Scott Road
Menifee, CA. Riverside County – Project No. B3-0689
OWNER: COUNTY OF RIVERSIDE**

**BID DATE: APRIL 25TH, 2018 BID TIME: 2:00 P.M.
Please respond by 5:00 p.m., APRIL 24TH, 2018
THIS PROJECT HAS AN 11 % DBE GOAL**

Coffman Specialties, Inc. (CSI) is requesting quotes from all qualified subcontractors and suppliers especially certified DBE firms for the following items of work, including but not limited to:

- TRUCKING / IMPORT BORROW
- EQUIPMENT RENTAL
- LEAD COMPLIANCE PLAN / ADL WORK
- SWPPP / WPC
- SURVEY / QC
- CONSTRUCTION AREA & ROADSIDE SIGNS
- PAVEMENT MARKING / STRIPING
- TRAFFIC CONTROL
- WATER TRUCK
- EARTHWORK / GRADING / ROADWAY EXCAVATION
- EROSION CONTROL
- METAL BEAM GUARD RAIL (MBGR) / FENCING
- STREET SWEEPING
- REBAR
- CONCRETE / MINOR CONCRETE
- ASPHALT / ASPHALT PAVING / ASPHALT DIKE
- COLD PLANING / PULVERIZING
- CLEAR & GRUB
- ELECTRICAL
- LANDSCAPING
- ROCK SLOPE PROTECTION
- STORMDRAIN / UNDERGROUND UTILITIES
- AGGREGATE SUPPLY / AGGREGATE BASE
- DEMOLITION / BRIDGE REMOVAL

Coffman Specialties, Inc. is signatory to Operating Engineers, Laborers, Teamsters, Cement Masons and Carpenters unions. Quotations must be valid for the same duration as specified by the Owner for contract award. Insurance and 100% Payment & Performance Bonds will be required, and will pay up to 1.5% for the cost of the bond. Waiver of Subrogation will be required. We will provide assistance/advice with obtaining Bonds/Insurance/Credit/Equipment/Materials and/or supplies. ****Subcontractors must provide a current contractor's license number and Department of Industrial Relations (DIR) current registration number with their quote.**

Plans and specs are available at no cost to interested firms. Please contact our office @ (858) 536-3100, email us: estimating@coffmanspecialties.com or you can visit our San Diego Office. We are an EOE & seriously intend to negotiate with qualified firms.

**Please send quotes via email to estimating@coffmanspecialties.com or via fax to (858) 586-016

If you have any questions or need further information, please contact Gus Rios or Marty Keane @ (858) 536-3100



9685 Via Excelencia, Ste 200 • San Diego, CA 92126

Phone: (858) 536-3100 • Bid Fax: (858) 586-0164 • e-mail inquiries to: estimating@coffmanspecialties.com

INVITATION TO BID - Request for Certified DBE Subcontractors & Suppliers

**Project: Rail to Rail Active Transportation Corridor Connector Project (Design-Build), IFB No. C51209C1166
Owner: Los Angeles County Metropolitan Transportation Authority (METRO)**

Bid Due Date: May 1, 2018 at 2:00 p.m.

DBE Goal – 22% (Design) and 21% (Construction)

This solicitation is in response to Metro's DBE requirements. Flatiron will provide an equal opportunity to DBEs and intends to conduct itself in good faith with DBE firms seeking subcontractor opportunities for the contract. Request for quotes from certified DBEs for the following, but not limited to, scopes of work for Design and Construction.

Design: Electrical Design, Hazardous Materials / Soil Remediation Compliance, Landscape Design, Public Outreach, Railroad Coordination, Roadway/Civil Design, Striping & Signage Design, Survey and Construction Staking Design, Traffic Control Design, Utilities Design and Coordination.

Construction: Aggregate Supply, Anti-Graffiti Coating, Asphalt Paving, Concrete Supply, Demolition, Electrical, Fencing, Geotextiles, Graffiti Removal, Hardscape, Hazardous Material Haul, Hydroseeding, Landscaping and Irrigation, Metal Gratings, Minor Concrete, Miscellaneous Metals, Noise Control, Painting, Plumbing, Quality Control, Railroad, Reinforcing Steel, Signage, Striping, Survey, Sweeping, Temporary Erosion Control, Tree Installation.

Quotes are required by 5:00 p.m. on Wednesday, April 18, 2018.

Access to Bidding Documents (plans and specifications) is available in electronic format from Flatiron. Additionally, Bidding Documents are available to view at our Chino Hills, CA or San Marcos, CA offices. Please send an email to request access to the Bidding Documents or to make an appointment to view the documents at one of our offices (between the hours of 7:30 a.m. and 4:00 p.m.).

Flatiron analyzes and considers each DBE quote, including those that are broken down into economically feasible units to facilitate bidding. Quotations must be valid for same duration as specified by Owner for contract award (180 calendar days).

Bond Requirements: Notwithstanding any contrary language in a bid to Flatiron or any prior course of dealing between Flatiron and a bidder, and unless waived in writing by Flatiron, Flatiron reserves the right to require each bidder to provide payment and performance bonds assuring bidder's obligations to Flatiron in the amount of 100 percent of the bid to Flatiron. Flatiron will reimburse the bond premium at actual cost not to exceed 3%. Assistance in obtaining bonding, insurance and financing is available upon request. Flatiron will provide referral information to resources that may assist in providing bond, insurance or financing to DBE firms.

Non-DBE Subs/Suppliers: Indicate lower-tier DBE participation offered on your quotation as it will be evaluated with your price.

Flatiron West, Inc.

1770 La Costa Meadows Drive, San Marcos, CA 92078
Phone (760) 916-9100 / FAX (760) 471-4860

Point of Contact: Jannette Carter, Estimating Administrator (SDBids@flatironcorp.com)

WE ARE AN EQUAL OPPORTUNITY EMPLOYER



Kiewit

**Kiewit Infrastructure West Co.
4650 Business Center Drive Fairfield, CA 94534
Attn: Victor Molina • norcal.bids@kiewit.com Fax:
707-439-7301**

Requests bids from certified SF Contract Monitoring Division (CMD) Small and Micro-LBEs, CUCP and SBA certified Disadvantaged Business Enterprises (DBE) Subcontractors, Consultants, and/or Suppliers seeking to participate in the SFUC, SEWP/CP New Headworks Facility Scope 1 Site Preparation Project in San Francisco, CA.

<http://www.sfgov.org/cmd> / <http://www.epa.gov> / <http://www.sba.gov> / www.californiaucp.org

Subcontractors and Suppliers for the following project:

**SEWP/CP New Headworks Facility Scope 1
Site Preparation Project
Contract No. WW-628-01**

**Owner: San Francisco Public Utilities
Commission**

Bid Date: May 14, 2018 @ 2:00 P.M.

**Small/Micro Local Business Enterprises (LBEs)
Disadvantaged Business Enterprises (DBEs)**

Disabled Veteran Business Enterprises (DVBE), Minority Business Enterprises (MBE), Women Business Enterprises (WBE), Small Business Enterprises (SBE), Small Businesses in a Rural Area (SBRA), Labor Surplus Area Firms (LSAF), or Historically Underutilized Business (HUB) Zone Businesses wanted for the following scopes, including, but not limited to:

Aggregates, Cellular Concrete, Concrete Supply, Concrete Pumping, Concrete Reinforcement Supply & Install, Precast Concrete, CIDH, CLSM, Crew Transportation, Dewatering, Fencing, Groundwater Monitoring, Piping, Shoring, Street Sweeping, SWPPP, Trucking & Hauling and Water Truck.

Bonding, insurance and any technical assistance or information related to the plans or specification and requirements for the work will be made available to interested SF CMD certified, Small/Micro SB LBE and CUCP, MBE, SBE, SBRA, LSAF OR HUB certified DBE suppliers and subcontractors. Please visit SFUC website: <http://sfgov.org/cmd/surety-bond-assistance-program-1> for their Bond Assistance Program. Assistance with obtaining necessary equipment, supplies, materials, or services for this project will be offered to interested certified suppliers and subcontractors.

**Subcontractor and Supplier Scopes are due
May 7, 2018 and**

Quotes NO LATER THAN May 11, 2018 at 5 P.M.

Plans are available for viewing at our office at our address below and through SmartBidNet (SBN).

All subcontractors that are registered in our SBN database will receive an invitation to bid. Please visit <http://www.kiewit.com/districts/northern-california/overview.aspx> to complete the SF-UC Confidentiality Agreement, register your company and to receive bidding information, view plans and specifications.

You can view the plans in our office during regular business hours by appointment.

Performance Bond and Payment Bonds may be required for subcontractors and a suppliers bond for suppliers, where applicable.

**Clean Water State Revolving Fund (CWSRF)
Provisions apply**

**Project Labor Agreement applies
Prevailing Wage apply**

**An Equal Opportunity Employer
CA Lic. 433176
DIR # 100001147**

**Visit www.sbeinc.com to download
a PDF version of the latest SBE Newspaper
and SBE Newsletter**

SPECIAL OFFER

DO YOU KNOW ABOUT THE 3-FOR-1 AD OFFER IN THE SMALL BUSINESS EXCHANGE?

SBE increases the value of a single ad ... by 3!

We will make it worth your while using
our value-added services!

3 ADS FOR ONE PRICE

- 1 paid in the SBE weekly newspaper and you receive
- 1 in the Friday daily e-Newsletter
- 1 on the website (running until bid date).

(Proof of Publication will be included for all)

3 for 1

Email ad copy to **Nabil Vo** at nvo@sbeinc.com

SBE IS CERTIFIED BY:

- California DGS

- California UCP

- New Orleans RTA (Louisiana UCP)

- New York UCP

Adjudicated newspaper of general circulation in the City and County of San Francisco (Gov. C. 6023)
Outreach periodical contract with the San Francisco OCA (Resolution No. 26 7-17)

SMALL
BUSINESS
EXCHANGE

795 Folsom Street, 1st Floor
San Francisco, CA 94107
Phone: 800-800-8534 • Fax: 415-778-6255
www.sbeinc.com



California Sub-Bid Request Ads

Shimmick Construction Company Inc.

8201 Edgewater Drive, Suite 202 • Oakland, CA 94621
Phone (510) 777-5000 • Fax (510) 777-5099

LBE & DBE Subcontractor/Supplier Bids Requested For:

San Francisco Public Utilities Commission

General Contractor: Sundt/Walsh, A Joint Venture

SEWPCP New Headworks Facility Scope 1 – Site Preparation Rebid

Contract No. WW-628-01

BID DATE: May 14, 2018 at 2:00PM

Fax all quotes to 510-777-5099 or email to northwest.esteeming@shimmick.com

Requesting certified LBE & DBE Subcontractor and Supplier Quotes on: **Rebar, Structural Concrete, Yard Piping, Process Piping, Trench Excavation, Construction Testing, Painting and Coating**

Contract Documents are subject to a non-disclosure agreement.

Please contact Jamie Helmick at jhelmick@shimmick.com for more information.

Bidders are hereby notified that work to be performed under this contract will be in full or in part financed by the Clean Water State Revolving Fund (SRF), administered by the United States Environmental Protection Agency (US EPA) and the State Water Resources Control Board (SWRCB). The Bidder shall comply with all applicable terms and conditions, special provisions, and reporting requirements, as set forth in these specifications, and as may be required by federal law, rule, or regulation. Refer to Contract Section 00 48 10.01 for more information.

Subcontractors and Suppliers interested in this project may contact Bill Johnson by email at bjohnson@shimmick.com.

100% Performance and Payment bonds with a surety company subject to approval of Shimmick Construction Company, Inc. are required of subcontractors for this project. Shimmick Construction will pay bond premium up to 1.5%. Subcontractors will be required to abide by terms and conditions of the AGC Master Labor Agreements and to execute an agreement utilizing the latest SCCI Long Form Standard Subcontract incorporating prime contract terms and conditions, including payment provisions. Shimmick Construction's listing of a Subcontractor is not to be construed as an acceptance of all of the Subcontractor's conditions or exceptions included with the Subcontractor's price quote. Shimmick Construction requires that Subcontractors and Suppliers price quotes be provided at a reasonable time prior to the bid deadline to enable a complete evaluation. For assistance with bonding, insurance or lines of credit contact Scott Fairgrieve at (510) 777-5000.



**Looking for Subcontractors,
Vendors, and Suppliers?**

**Advertise your Sub-Bid
Requests in the
Small Business Exchange.**

**With a monthly readership
of 75,000, SBE reaches a
diverse audience, cutting
across ethnic and gender
lines as well as traditional
industry segments.**

Call 1-800-800-8534
or visit us at www.sbeinc.com

The Risks of U.S. Steel and Aluminum Tariffs

Continued from page 5

ter the World Trade Organization (WTO) ruled against them. Some research has shown that these tariffs cost the U.S. economy as many as two hundred thousand jobs. Meanwhile, Obama applied tariffs of up to 522 percent on some Chinese steel in 2016.

The Commerce Department also regularly applies targeted antidumping duties on specific steel products that it finds benefit from unfair subsidies; there are over a hundred such trade remedy actions currently in place.

But economists say that Trump's proposal is different. Trade expert Chad P. Bown calls the policy "unprecedented" in both its scope and legal justification. Previous tariffs targeted specific countries, such as China, or included exemptions for close allies, as Bush's did. Trump says his tariffs will apply to all countries.

Further, Trump's use of a national security law to implement the tariffs is extremely unusual, though Bown notes that Reagan used the same law for more limited purposes. While normal trade actions follow public investigations, Trump's process was opaque. The law also gives the president total discretion over how and for how long to apply the tariffs, unlike other trade actions, which

are based on economic conditions and subject to periodic review.

What are the risks to global trade?

Trump's actions, especially if they are applied broadly rather than targeted at offending countries, run the risk of sparking a cycle of retaliation—a trade war.

Some of Washington's closest allies would be hardest hit. The largest exporter of steel to the United States is Canada. Germany, Japan, and South Korea are also among the top-ten exporters, and China is only the eleventh largest. Canada called the tariffs "absolutely unacceptable," while top European Union officials said they are developing plans to retaliate. Some European companies said they were putting U.S. investments on hold in response.

Retaliatory tariffs could put other U.S. industries in jeopardy as well. China is already reviewing whether to restrict imports of American wheat and soybeans in response to previous tariffs, and experts say Beijing could expand that policy to other major U.S. imports, including technology, aircraft, and intellectual property.

What is the role of the WTO?

Economists warn that Trump's appeal to national security could undermine the framework of trade

rules painstakingly constructed after World War II. Other countries could challenge Trump's tariffs at the WTO, but that body's rules include exemptions for national security measures, a loophole that has rarely been exploited. Legal experts say it is unlikely that the Trump administration would lose such a case.

A WTO challenge could have several unintended consequences, analysts say. If Trump were to lose, he could ignore the ruling, undermining the WTO, or he could withdraw the United States from the institution altogether, which he has previously threatened to do. On the other hand, if he were to win, it could open the door to other countries using the national security exemption, potentially escalating protectionism.

This, in turn, could relieve pressure on China, whose own subsidies and other trade distortions have been a major target at the WTO dispute forum. If national security were to become an accepted rationale for protectionism, Beijing could increase its own discriminatory practices and further block U.S. imports and investment. U.S. allies have made this case, arguing instead for a united front against Chinese overproduction.

SOURCE: www.cfr.org



California Sub-Bid Request Ads

DBE SUBCONTRACTORS/SUPPLIER BIDS/PROPOSALS REQUESTED

Project: RIVER SUPPLY CONDUIT IMPROVEMENT UPPER REACH – UNIT 7 PROJECT

IFB No. 7207

Owner: City of Los Angeles Department of Water and Power

Sub-Bid/Proposal Due Date: April 17, 2018 (so that all bids/proposals can be fairly evaluated)

Bid/Proposal Due Date: April 19, 2018 at 2:00 p.m.

Frontier Kemper Constructors, Inc. is bidding/proposing the above project as a prime contractor and would appreciate quotes from DBE, MBE, WBO and OBE contractors and suppliers, including but not limited to the following work/services and/or materials:

Catholic Protection	Irrigation, Landscaping and Seeding	Security Services
CCTV Sewer	Light Weight Cellular Grout Backfill	Shaft Excavation and Support
Chlorination	Misc. Metals	Steel Water Pipe (Welded)
Clearing and Grubbing	Noise/Vibration Monitoring	Steel Pipe Welding
Dewatering	Paving	Steel Pipe Valves and Fittings
Drilling and Grouting	Portable Toilets/Service	Survey
Electrical Temp and Permanent	Precast Concrete Tunnel Liners - Furnish	Temporary Construction Materials
Electrical Equipment & Controls	Precast Vaults and Structures	Traffic Control
Erosion Control	QA/QC Testing	Trailers/Field Offices
Fencing – Chain link	Ready Mix Concrete Supply	Trucking/Hauling Tunnel Spoils
Fuel/Oil/and Grease	Rebar Furnish and Install	Waterproofing
Industrial Painting	Site Security	Water Treatment
Instrumentation/Settlement Monitoring	Steel Casing	

Plans and specifications are available for inspection at our office Monday through Friday 8:00 AM to 5:00 PM.

Should you need any assistance in obtaining bonding or insurance, please feel free to call us.

DBE, MBE, WBE and OBE firms can also refer to the Small Business Administration (SBA) and/or the Federal Department of Transportation (DOT) Bond Assistance Programs.

We are an Equal Opportunity Employer and, as a matter of policy, encourage the participation of Small, Minority and Women Owned Business Enterprises.

All DBE, MBE and WBE firms must be certified under the one or more of the following certification agencies: California Unified Certification Program (CUCP), MBDA, USSBA or State of California by the bid/proposal due date and will need to provide our office with a copy of their applicable certification to include with the bid/proposal.

If you have any questions or need additional assistance please contact Frontier Kemper Constructors, Inc. at (818) 362-2026 or by fax 818-833-4289. Ask for the LADWP River Supply Conduit Unit 7 Estimating Team

FRONTIER KEMPER CONSTRUCTORS, INC.

15900 OLDEN STREET, SYLMAR, CA 91342

PHONE 818/362-2062 FAX 818/833-4289

AN EQUAL OPPORTUNITY EMPLOYER



O.C. Jones & Sons, Inc.

1520 Fourth Street • Berkeley, CA 94710

Phone: 510-526-3424 • FAX: 510-526-0990

Contact: Jean Sicard

REQUEST FOR DVBE
SUBCONTRACTORS AND SUPPLIERS FOR:

Construct Auxiliary Lane

Hwy 99 Sacramento

Caltrans #03-1H3804

BID DATE: April 17, 2018 @ 2:00 PM

We are soliciting quotes for (including but not limited to): Trucking, Lead Compliance Plan, Construction Area Signs, Traffic Control System, Traffic Plastic Drum, Portable Changeable Message Sign, Water Pollution Control Program, Sweeping, Treated Wood Waste, Biologist, Clearing & Grubbing, Subgrade Enhancement Geotextile, Wood Mulch, Bonded Fiber Matrix, Compost, Geosynthetic Pavement Interlayer, Tack Coat, Cold Plane AC, Rail Element Wall, CIDH Concrete Pile, Sign Structure, Culvert Slurry-Cement Backfill, Minor Concrete, Delineator, Pavement Marker, Milepost Marker, Roadside Signs, Midwest Guardrail System, Striping & Marking, Rumble Strip, Electrical and Construction Materials.

An Equal Opportunity Employer

100% Performance & Payment Bonds may be required. Worker's Compensation Waiver of Subrogation required. Please call OCJ for assistance with bonding, insurance, necessary equipment, material and/or supplies. OCJ is willing to breakout any portion of work to encourage DBE Participation. Plans & Specs are available for viewing at our office or through the Caltrans Website at www.dot.ca.gov/hq/esc/oe/weekly_ads/index.php.

How U.S. cities can finance resilient and equitable infrastructure

Continued from page 1

tolls to ramp up, and for more speculative revenue sources like property tax increments to weather upturns and downturns.

Use future cost savings to pay for today's projects. Communities are already using strategies like Energy Savings Agreements (ESA) to monetize future cost savings. Capital and operating budgets are separated (for good reasons) but future operational savings may help fund for capital infrastructure improvements. For example, avoided costs of flooding (monetized through premium rebates) may help pay for the flood control and resiliency projects needed to address future sea level rise.

Transfer key risks to the private sector. Using pay-for-success bonding and public private

partnerships (P3s), cities are able to try new techniques without taking on the risk alone. The District of Columbia is piloting new green storm-water infrastructure in a pay-for-success structure where the private sector undertakes the risk that the new technology won't perform.

Embed equity into infrastructure. An infrastructure project in an economically distressed area can't be considered successful if it doesn't benefit the individuals living there. Seeking equity, local governments are expanding workforce programs, linking infrastructure to affordable housing, and identifying other ways to bring benefits back to the community.

Even if new federal infrastructure funding remains unlikely, communities can still pursue eq-

uitable development policies – and many other innovations in the guide. In particular, communities exploring new revenue options may benefit from Federal incentive funding, if adopted, as well as any expansion of Federal credit that would facilitate borrowing in conjunction with these new revenue streams.

Jen Mayer leads the third cohort of City Accelerator, which focuses on infrastructure finance. City Accelerator is an initiative of Living Cities, a collaborative of 18 foundations & financial institutions that aims to improve the lives of low-income people and the quality of their cities. She is also the author of the "Resilience, Equity and Innovation" report.

SOURCE: <http://americacityandcounty.com>



California Sub-Bid Request Ads

Guy F. Atkinson
Requests

Sub-bids from All Qualified & Certified DBE Subcontractors/Suppliers
for:

**County of Riverside Transportation Department
Interstate 215 at Scott Road Interchange Improvements**
in Riverside County in the Cities of Murrieta and Menifee
County Project No. B3-0689

Bids Wednesday, April 25, 2018

Description of Work, Services & Supply (but not limited to): INTERCHANGE IMPROVEMENTS & NEW OVERCROSSING: Aggregate Base, Alternative Pipe Culvert (18", 24", 36"), Anti-Graffiti Coating, Architectural Treatment, Asphalt Paving, Bar Reinforcing Steel (bridge, retaining wall), Chain Link Fence, CIDH (24", 60"), Clear and Grub, Concrete Barrier (various types), Corrugated Steel Pipe (24", 36", 48", 66"), Data Core, Demolition, Electrical, Erosion Control, Erosion Control Supply, Fractured Rib Texture, Furnish/Install Sign Structure (truss), Furnish Single Sheet Aluminum Signs (various sizes), Hot Mix Asphalt Dike, Joint Seals, Landscaping, Landscaping Supply, Lean Concrete Base, Metal Railing, Midwest Guardrail System, Minor Concrete, Miscellaneous Iron and Steel, Pavement Marking, Reinforced Concrete Pipe (18", 24", 36"), Remove Culvert, Roadside Signs, Rock Slope Protection, Rock Slope Protection Fabric, Street Sweeping, Structural Concrete, Tack Coat, Temporary Railing (Type K), Temporary Traffic Screen, Thermo Pavement Marking, Thermo Traffic Stripe, Traffic Stripe, Trucking, Welded Steel Pipe Casing (24").

REFER TO PROJECT SPECS FOR COMPLETE BID ITEM LIST.

ENGINEER'S ESTIMATE is \$31,500,000 - \$37,500,000

11% DBE Project Goal

*****Lower Tier DBE participation is greatly encouraged*****

Guy F. Atkinson

License # 1004388

18201 Von Karman Ave, 8th Floor, Irvine, CA 92612

social.esteeming@atkin.com | Phone: 949-382-7145 | Fax: 949-553-0252

Guy F. Atkinson is a union contractor and an Equal Opportunity Employer. Atkinson is signatory to the Carpenters, Cement Masons, Laborers and Operating Engineers Unions. 100% Performance & Payment Bonds from an approved surety company will be required for subcontractors with contract value greater than \$100,000. Atkinson will pay the cost of bonds up to 2.0%. We will assist in obtaining necessary equipment, supplies, materials or related services. We will split items of work (see project specs for full list of bid items) and provide assistance for bonding, LOC and insurance where needed. Prices must stay firm for 120 days per Bid Notice. Subcontractors will be expected to sign Atkinson's standard subcontract and to comply with our company's standard insurance requirements which include a waiver of subrogation. Please provide your contractor's license #, DBE cert # and DIR # with your quote. Atkinson requests that subs and vendors register and prequalify in our online system at <https://www.atknextranet.com> prior to bidding.

Plans and specs are available from the Riverside County Transportation Department.

The Supplemental Project Info and Addendum 1 are available online at (<http://rctlma.org/trans/Contractors-Corner/Notices-Inviting-Bids>)

Or contact Atkinson to view and download all bid documents through our online service, BuildingConnected.

Please contact Atkinson with any questions or for help with your bid.

Proven Management, Inc.

225 3rd Street, Oakland, CA 94607 Phone: 510-671-0000 • Fax: 510-671-1000

Requests proposals/quotes from all qualified and certified Disadvantaged Business Enterprise (DBE) subcontractors, suppliers, and truckers for the following project:

ELECTRIFICATION PROJECT TUNNEL MODIFICATIONS

Bayshore Station to the 16th Street Grade Crossing, SF

CALTRAIN SOLICITATION #18-J-C-070

Bids: 04/19/2018 @ 2 PM • SUBCONTRACTING GOAL – DBE – 7%

Demolition; Site Clearing; Dewatering; Earthwork; Aggregate Base Course; Storm Drainage Systems; Station Platforms, Sidewalks, Curbs & Gutters; Asphalt Paving; CIP Concrete; Concrete Forming & Finishing; Concrete Rebar; Metal Fabrications; Timber Crossties & Switch Ties; Rail; Track Removal & Salvage; Track Construction; Thermite Rail Welding; Masonry; Shotcrete; Electrical, OCS Rigid Contact Rail System; OCS Signage; Painting OCS Poles; OCS Pole Foundations; Liner Grouting; Clearance Notching; Anchors; Instrumentation; Insulators

Bonding, insurance, lines of credit and any technical assistance or information related to the plans & specifications & requirements for the work will be made available to interested SBE certified suppliers & subcontractors. Assistance with obtaining necessary equipment, supplies, materials, or related assistance or services for this project will also be offered to interested SBE certified suppliers, subcontractors, truckers. PMI is signatory to the Operating Engineers, Carpenters, and Laborers Collective Bargaining Agreements.

100% Payment & Performance bonds will be required from a single, Treasury-listed surety company subject to PMI's approval. PMI will pay bond premium up to 1.5%. Subcontractors awarded on any project will be on PMI's standard form for subcontract without any modifications. For questions or assistance required on the above, please call. **We are an Equal Opportunity Employer**

Small Business Exchange

The Sub-Bid Request Specialist

It's takes a sharp pencil and qualified, competitive sub-contractors, vendors, and suppliers to win the bid and achieve the diversity goals.

Look no further. We have them all in our database

Need construction contractors and suppliers familiar with public contracting, bondable, certified by cities, states and federal entities, and willing to work in one or many locations?

We have that, too.

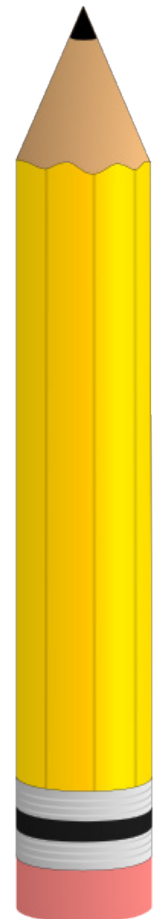
Want to reach them by industry-specific codes (NAIC/SIC/UNSPSC)?

We can do that, too

The next time you're bidding project where time and accuracy are of the essence, call us.

We'll make it happen.

We are on the move to make your business better.



Call 1-800-800-8534